



TWICE AS SAFE! **Kannad Integra ELT Smart Pack**

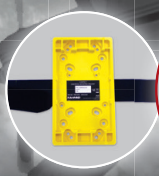
with GPS Navigation Interface

**Includes the revolutionary Integra ELT
and the Integra e-NAV NMEA**

The Integra e-NAV NMEA is a cable to connect an Integra ELT to the aircraft GPS, as a GPS back up antenna.

If the Integra's internal GPS antenna is unsuccessful for any reason, the position from the INTEGRA e-NAV NMEA will be used.

Meaning you are twice as likely to get GPS pick up.



Kannad Integra ELT Smart Pack

with GPS Navigation Interface

**Includes the revolutionary Integra ELT
and the Integra e-NAV NMEA**

- 1 Integra Emergency Location Transmitter**
AF INTEGRA P/N S1851501-02, designed for flat installation on fix wings aircraft or specific installation on helicopters
- 2 Compact Universal Mounting bracket**
Designed for retrofit, to replace a former 121.5 ELT with an AF INTEGRA
- 3 Integra e-NAV NMEA**
Navigation Interface designed to be connected to RS232 GPS NAV equipment
- 4 SUB-D 9 Pts Female connector**
- 5 RC200 Remote Control Panel**



McMURDO

info@mcmurdogroup.com

www.mcmurdogroup.com