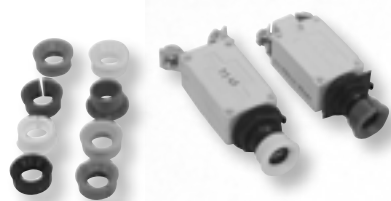




## Breaker Hardware for Klixon and Mechanical Products

P/N	Description
14988-3	Klixon Terminal Screw
11414-4	Klixon 7277 Series Guidewasher
17417-14	Klixon 7277 Series Lockwasher
71212-5	Klixon 7277 Series Mounting Nut
19338-4	Klixon Lockwasher
W23-1	P&B Mounting Nut
W58-1	P&B Mounting Nut
W31-1	P&B Mounting Nut



## Colored Breaker Collars

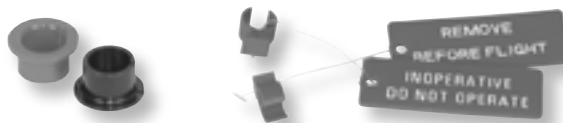
These circuit breaker collars facilitate the identification of breakers at just a glance. Greatly improves cockpit management.

P/N	Color
10164-1	Black
10164-2	Ivory
10164-3	White
10164-4	Orange
10164-5	Red
10164-7	Green
10164-8	Gray
10164-9	Yellow
10164-10	Blue



## Circuit Breaker Locks

These circuit breaker locks will ensure that circuit breakers will not be closed inadvertently. The lock is extremely useful when equipment has been removed for repair to prevent spikes and shorts.



P/N	Color
10237-1	Red
10237-2	Black

P/N	Description
S4933959-501	Red Lock
S4933959-521	Red Lock with tag "REMOVE BEFORE FLIGHT"
S4933959-531	Red Lock with tag "INDOPERATIVE DO NOT OPERATE"