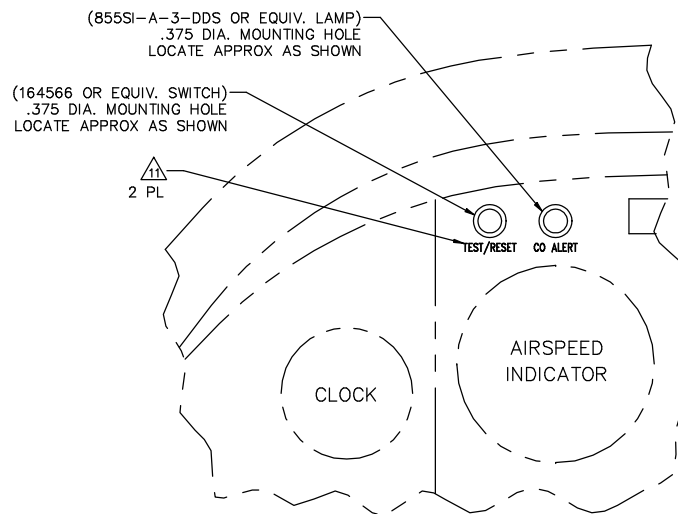


SECTION D-D
(TYPICAL C/B INSTL)
C/B REMOVED FOR CLARITY



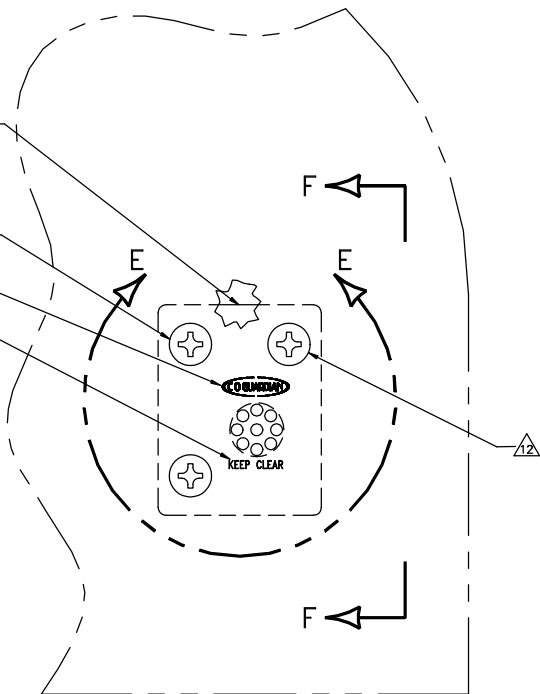
SECTION C-C

(452 REMOTE CO DETECTOR)
ALIGN VERTICALLY WITH ANY
EXISTING COMPONENTS,
LOCATE APPROX AS SHOWN.

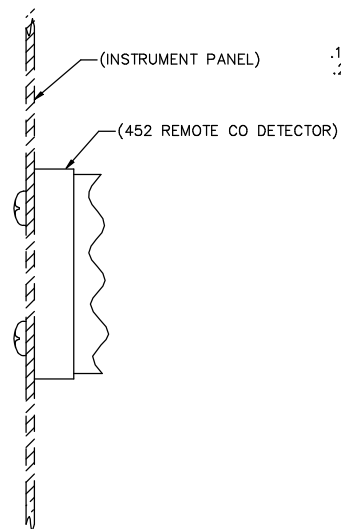
MS35214-44 SCREW
3 PL

11

11

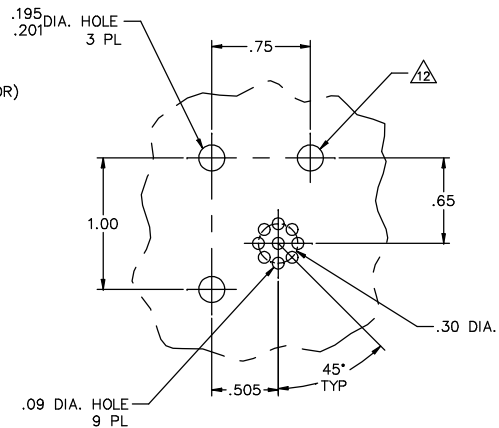


SECTION B-B

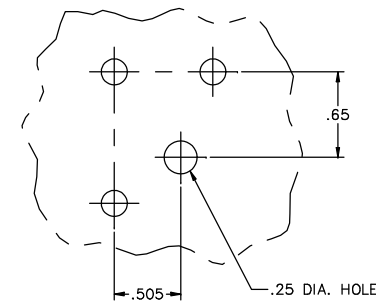


SECTION F-F

→ FWD

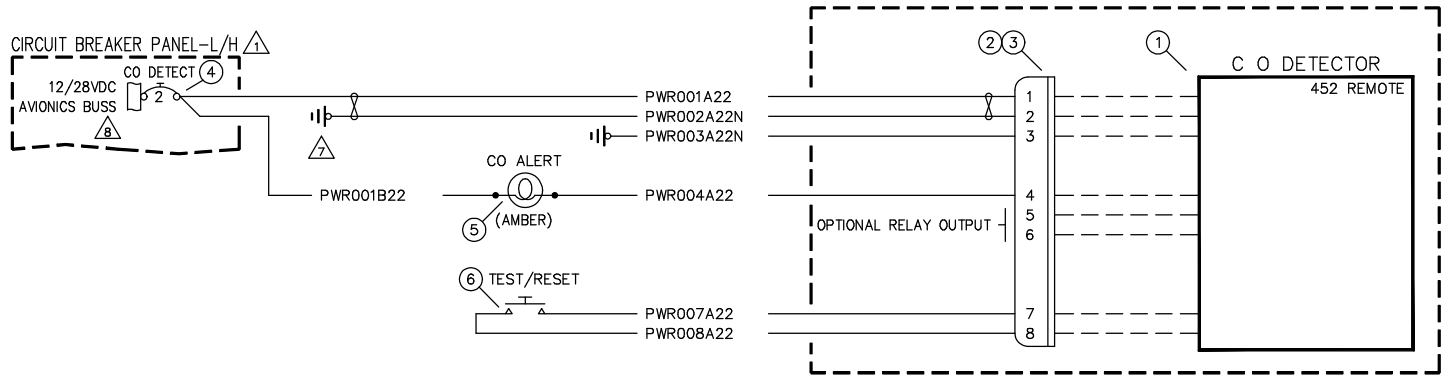


SECTION E-E
MOUNTING HARDWARE REMOVED FOR CLARITY



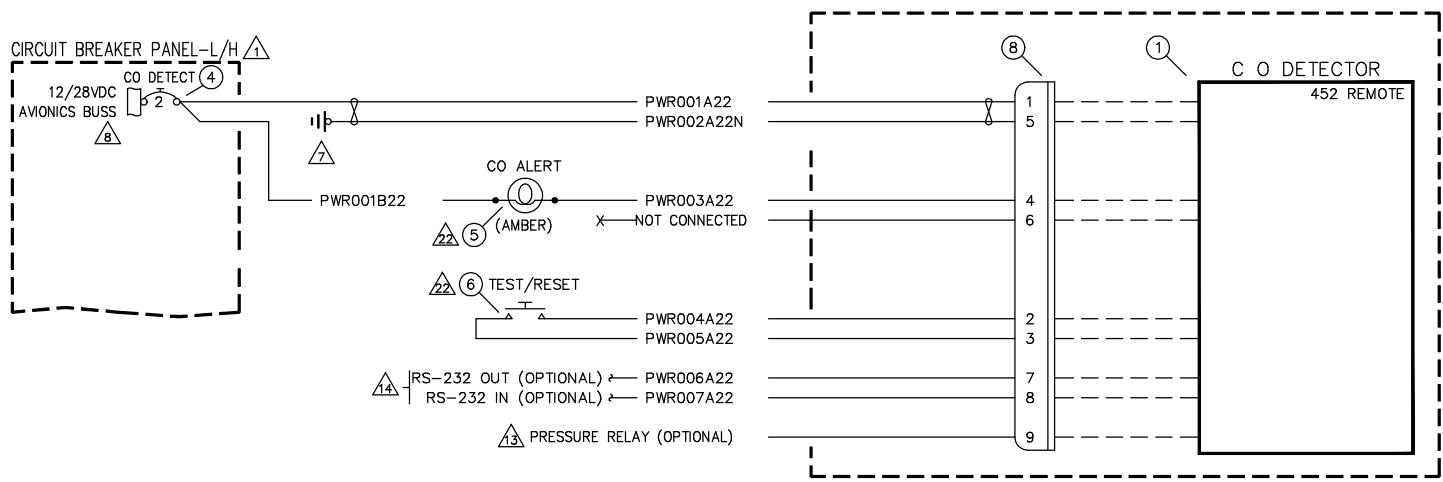
OPTIONAL HOLE PATTERN

CO GUARDIAN		1001 East Airport Drive Tucson, AZ 85706	
TITLE CO DETECTOR INSTL.			
DRAWING NO.	REV	REV	REV
01-2510-02	2	7	E



C O DETECTOR INSTALLATION WIRING DIAGRAM

452-201-001 THRU -004 INSTL

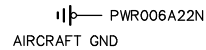
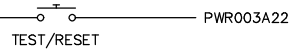
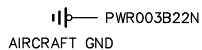
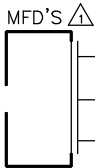
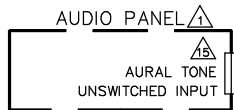
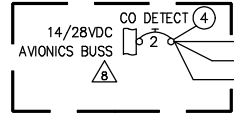


C O DETECTOR INSTALLATION WIRING DIAGRAM

452-201-005 THRU -009 INSTL

CO GUARDIAN		1001 East Airport Drive Tucson, AZ 85706	
TITLE CO DETECTOR INSTL.			
DRAWING NO.	REV	REV	REV
01-2510-02	3	7	E

CIRCUIT BREAKER PANEL



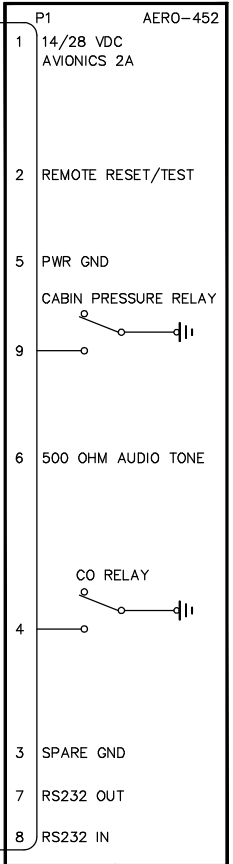
PWR001A22

PWR010A22

PWR009A22

①②③

CO DETECTOR



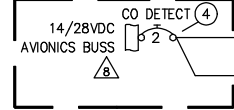
C O DETECTOR INSTALLATION WIRING DIAGRAM

452-201-010

		1961 East Airport Drive Tucson, AZ 85706	
TITLE CO DETECTOR INSTL.			
DRAWING NO. 01-2510-02		SH 4 OF 7	REV E

FILENAME: 01-2510-02E

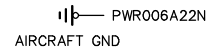
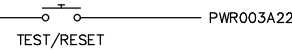
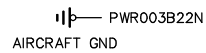
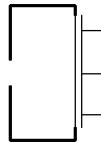
CIRCUIT BREAKER PANEL



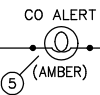
AUDIO PANEL



MFD'S



PWR001D22



PWR001E22

PWR001A22

PWR010A22

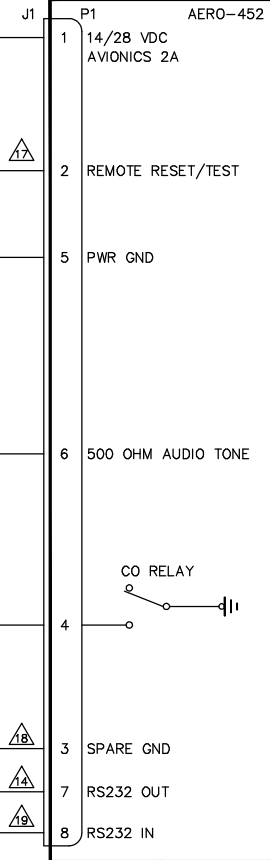
PWR009A22

PWR001A22

PWR007A22

① ② ③

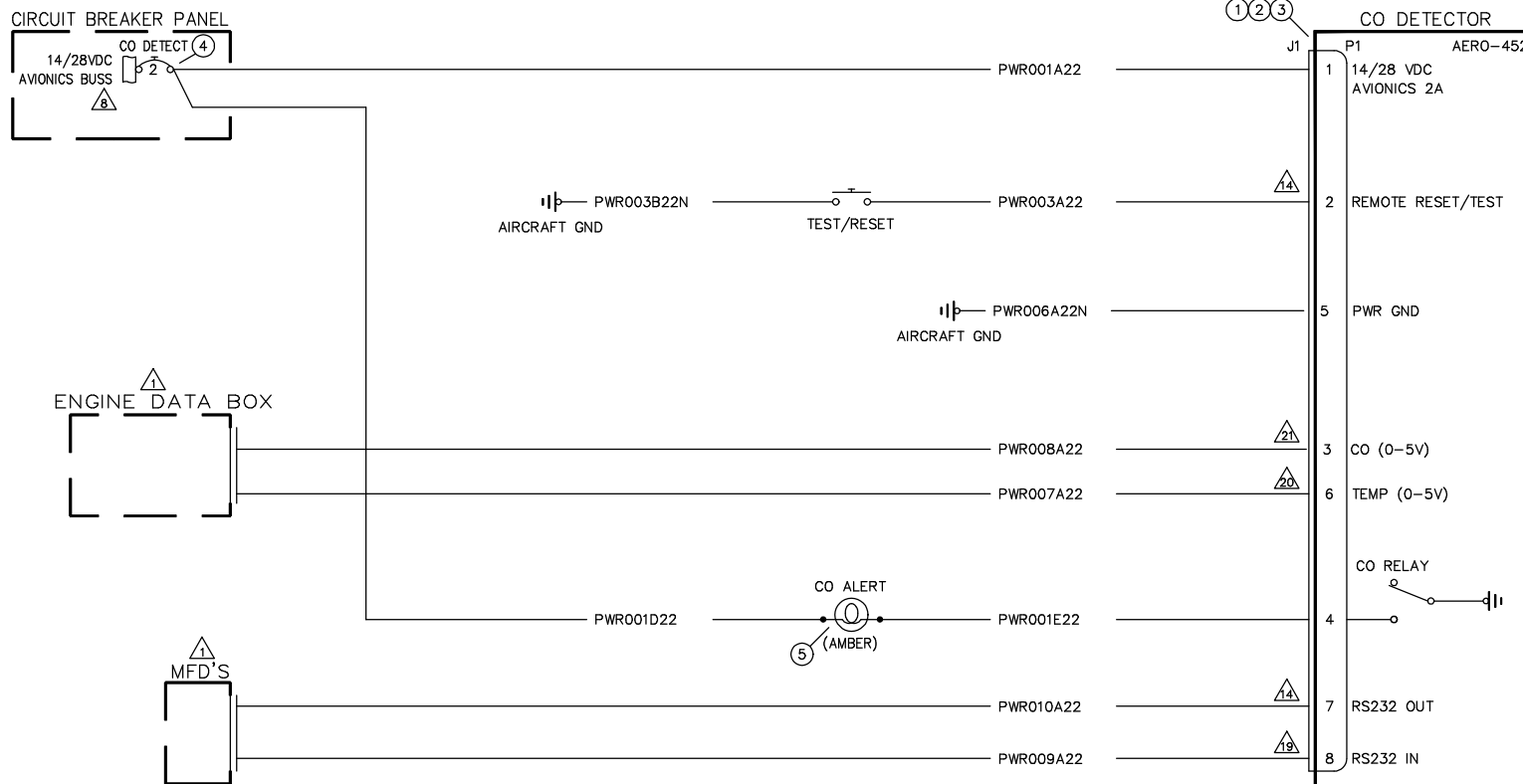
CO DETECTOR



C O DETECTOR INSTALLATION WIRING DIAGRAM

452-201-011

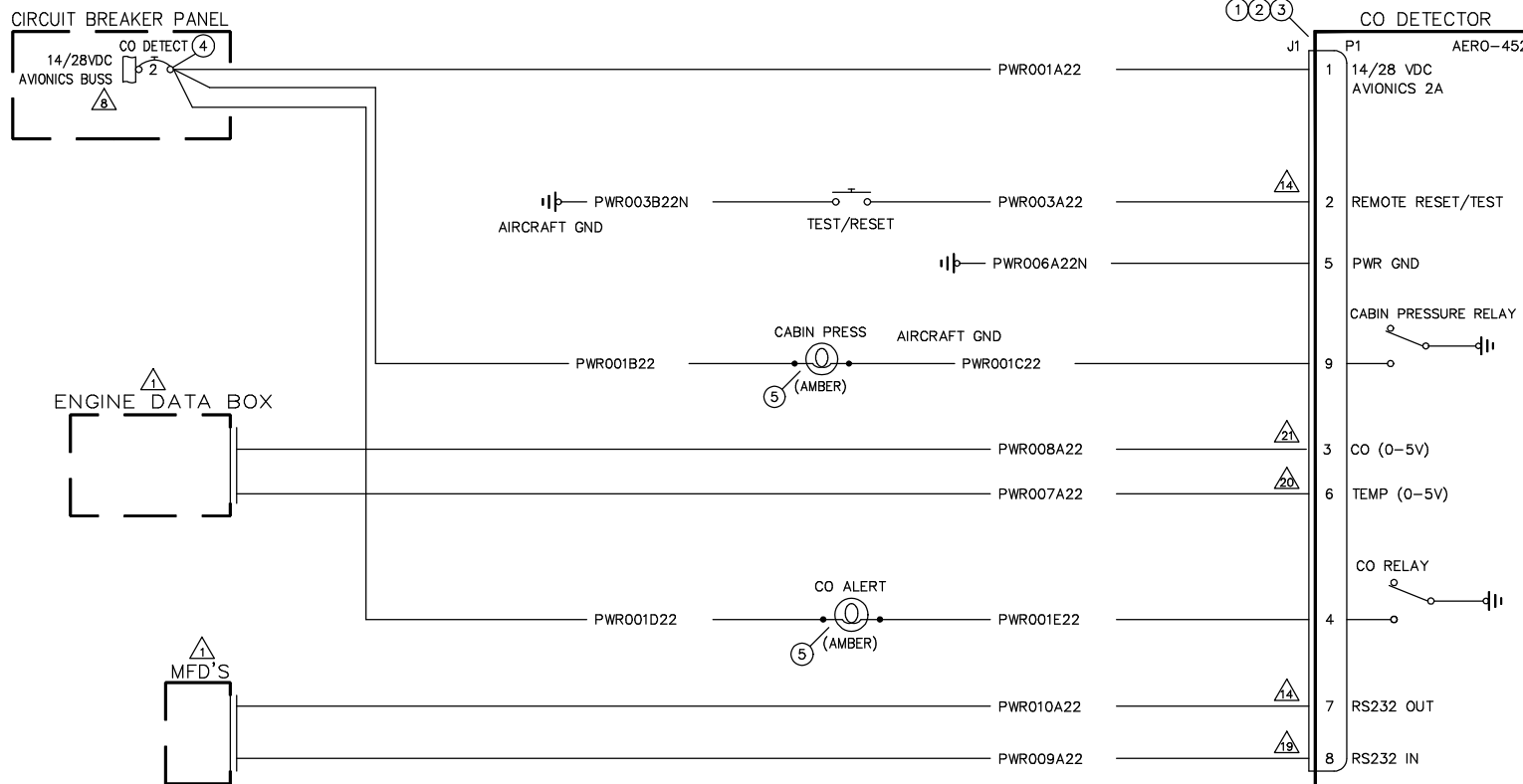
		1951 East Airport Drive Tucson, AZ 85706	
TITLE			
CO DETECTOR INSTL.			
DRAWING NO.	SH	REV	
01-2510-02	5	7	E



C O DETECTOR INSTALLATION WIRING DIAGRAM

452-201-012

CO GUARDIAN		1951 East Airport Drive Tucson, AZ 85706	
TITLE CO DETECTOR INSTL.			
DRAWING NO.	REV	REV	REV
01-2510-02	6	7	E



C O DETECTOR INSTALLATION WIRING DIAGRAM

452-201-013

		1951 East Airport Drive Tucson, AZ 85706	
		TITLE CO DETECTOR INSTL.	
DRAWING NO. 01-2510-02	Sht of 7	REV 7	E