

EXHIBIT A-102

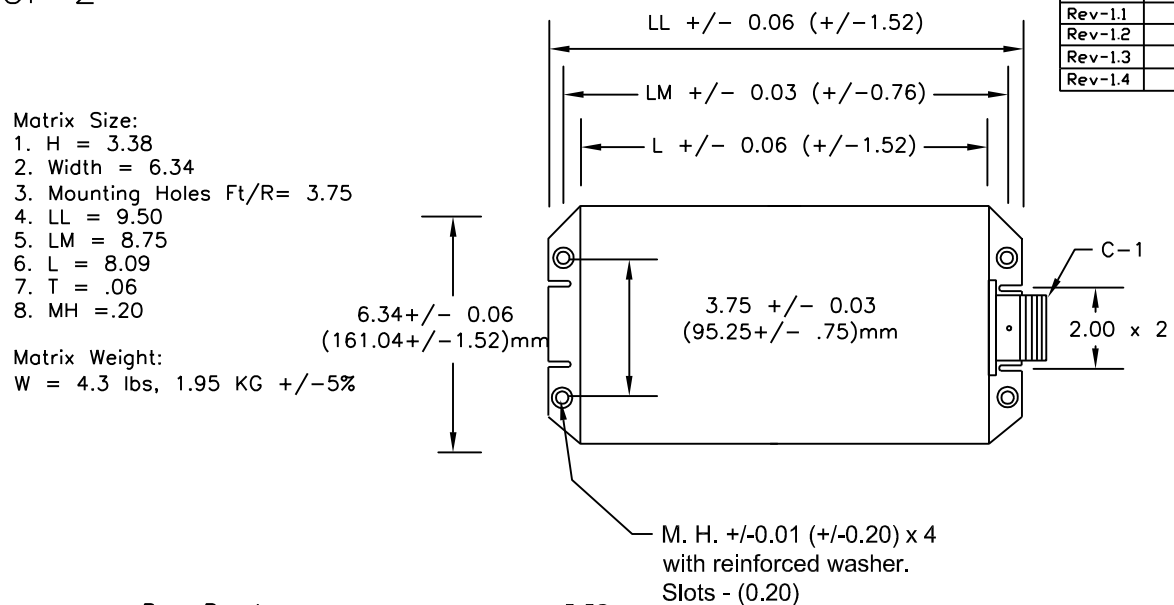
1 OF 2

Matrix Size:

1. H = 3.38
2. Width = 6.34
3. Mounting Holes Ft/R= 3.75
4. LL = 9.50
5. LM = 8.75
6. L = 8.09
7. T = .06
8. MH = .20

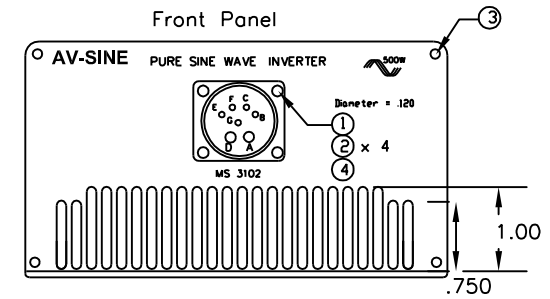
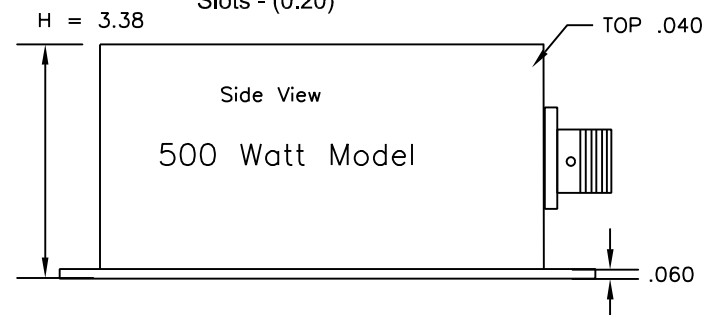
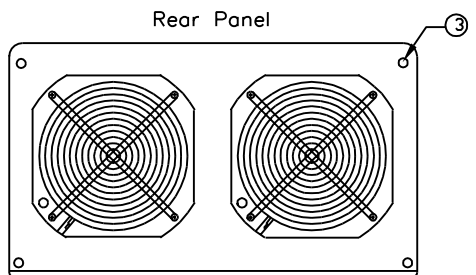
Matrix Weight:

W = 4.3 lbs, 1.95 KG +/-5%



PINS	MODEL 500 watts
A	DC INPUT +28vdc
B	OUTPUT 115 VAC, 60hz
C	OUTPUT RETURN, NEUTRAL
D	DC INPUT RETURN, CHASSIS GND
E	REMOTE ON-OFF (GRD for ON)

C1 = MS Connector
MS 3102 E18-9S Bulk Head
Mate With
J1 = MS 3106 E18-9P Connector End



ITEM	QTY.	PART NO.	DESCRIPTION
1	4	LS01-	MS35206 Screw 4-40 PPH Phillips Pan Head
2	4	LS01-	MS - Nut kepps 4-40 - with lock washer
3	8	LS01-	MS - screw for Front / Rear Panel ?
4	A/R	LS01-	Loctite 290 to secure/lock nuts
5		LS01-	

- Note:
1. Mfg to provide LSA with metal fabrication and anodizing.
 2. Silk-screening and label finalized by LSA.
 3. Filtering, remote control, ms connector pcb added to to BOM, design.
 4. Fans, high reliability bearing, temp added.
 5. Conformal coating added.
 6. Temp sensors, (mil) added.

Lone Star Aviation, Inc.
Title: VP Operations
James Ray Mantos
604 So. Wisteria Street
Mansfield, Texas 76011
682-518-8882
682-518-8831 fax

UNLESS NOTED OTHERWISE TOLERANCE BLOCK: DIMENSIONS ARE IN INCHES DECIMALS ANGULAR XX ±.030 ±1° XXX ±.015 XXXX ±.0005	PROPRIETARY THIS DOCUMENT AND THE DATA DISCLOSED HEREWITH IS NOT TO BE REPRODUCED, USED, OR DISCLOSED IN WHOLE OR IN PART TO ANYONE WITHOUT WRITTEN AUTHORIZATION FROM LONE STAR AVIATION	
	DO NOT SCALE DRAWING	APPROVALS DATE
	MATERIAL N/A	DRAWN BY JR MANTOS 2-12-08
FINISH N/A	APPROVED BY	TITLE DC to AC Inverters 500 Watts
	NEXT ASSY.	SIZE B DRAWING NO. LS03-06000 REV 1.4
		SCALE NONE SHEET 1 OF 1

TITLE DC to AC Inverters
500 Watts

SIZE B DRAWING NO. LS03-06000 REV 1.4

SCALE NONE SHEET 1 OF 1

DWG. NO. LS03-06000
 SH. 1 of 1
 REV. C Rev-14