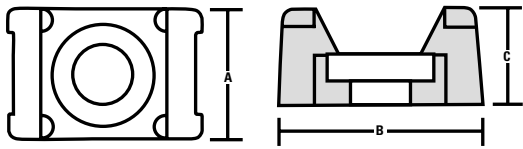


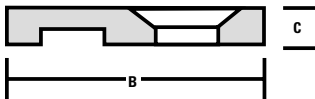
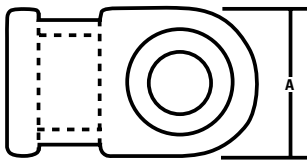
Cable Tie Mount



P/N	Mounting	Dimensions-Inches		
		A	B	C
CTM0	#6 Screw	.380	.600	.265
CTM1	#8 Screw	.380	.600	.265
CTM2	#8 Screw	.620	.875	.375
CTM3	#10 Screw	.620	.875	.375
CTM4	1/4" Screw	.620	.875	.375

Low Profile Cable Tie Mount

P/N	Mounting	Dimensions-Inches		
		A	B	C
MB2	#8 Screw	.495	.810	.135



Tensioning Tool

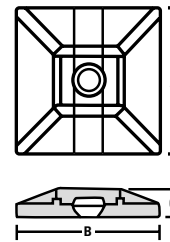
The Mark 7's ergonomic design ideally fits the operator's hand, while an internal low friction roller bearing mechanism reduces hand effort and provides a smooth stroke action. A precision ground, razor sharp blade assures flush, clean cut-offs while weighing only 9.5 ounces.

A one inch stroke reduces the number of trigger cycles required. The Mark 7 offers quick, infinite adjustability within its broad cut-off tension capability (T18-T50 tyrap).

P/N MK7

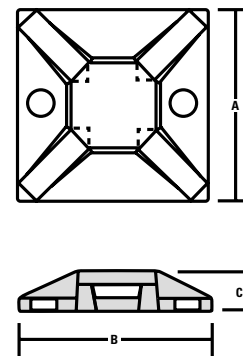


Cable Tie Mount Base (2-way)



P/N	Mounting	Dimensions-Inches		
		A	B	C
MB4SH	#6 Screw	1.125	1.125	.210
MB4SHA	Adhesive	1.125	1.125	.210

Cable Tie Mount Base (4-way)



P/N	Mounting	Dimensions-Inches		
		A	B	C
MB2.5A	Adhesive	0.625	0.625	0.130
MB3	#4 Screw	0.750	0.750	0.150
MB3A	Adhesive	0.750	0.750	0.150
MB4	#8 Screw	1.125	1.125	0.190
MB4A	Adhesive	1.125	1.125	0.190
MB5	#8 Screw	1.500	1.500	0.250
MB5A	Adhesive	1.500	1.500	0.250