

## Pushbutton



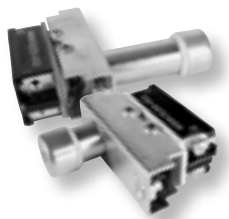
P/N	Contacts	Button Color	Contact Rating
<b>30-1</b>	SPST-NO	RED	1.00 A @ 115V
<b>30-3</b>	SPST-NO	BLACK	1.00 A @ 115V
<b>39-1</b>	SPST-NO	RED	.50 A @ 115V
<b>39-3</b>	SPST-NO	BLACK	.50 A @ 115V

## Push to Talk



P/N	Contacts	Button Color	Contact Rating
<b>MSP103C2</b>	SPST	Red	3A @ 125VAC Silver plated Brass Contact
<b>MSPS103C</b>	SPST	Red	5A @ 125VAC Silver plated Brass Contact

## Helicopter Foot Operated Push to Talk



P/N M8805/55-001 Short  
P/N M8805/55-002 Long

## Miniature Bat Toggle



P/N	Contacts	Action
<b>MTA106D</b>	SPDT	On, None, On
<b>MTA106E</b>	SPDT	On, Off, On
<b>MTA106F</b>	SPDT	On, Non, (On)
<b>MTA106G</b>	SPDT	(On), Off, (On)
<b>MTA106H</b>	SPDT	On, Off, (On)
<b>MTA206N</b>	DPDT	On, None, On
<b>MTA206P</b>	DPDT	On, Off, On
<b>MTA206R</b>	DPDT	On, None, (On)
<b>MTA206S</b>	DPDT	(On), Off, (On)
<b>MTA206T</b>	DPDT	On, Off, (On)
<b>MTA206PA</b>	SP3T	On, On, On
<b>MTA306D</b>	3PDT	On, None, On
<b>MTA306E</b>	3PDT	On, Off, On
<b>MTA406N</b>	4PDT	On, None, On
<b>MTA406P</b>	4PDT	On, Off, On
<b>MTA406PA</b>	DP3T	On, On, On

( ) = Momentary

## Miniature Locking Bat Toggle



P/N	Contacts	Action
<b>MTL106D</b>	SPDT	On, None, On
<b>MTL106E</b>	SPDT	On, Off, On
<b>MTL206N</b>	DPDT	On, None, On
<b>MTL206P</b>	DPDT	On, Off, On
<b>MTL206S</b>	DPDT	(On), Off, (On)
<b>MTL306D</b>	3PDT	On, None, On
<b>MTL406N</b>	4PDT	On, None, On

( ) = Momentary