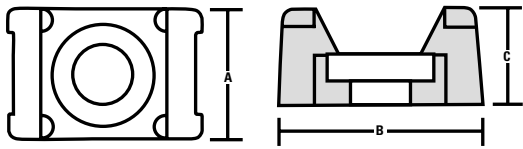


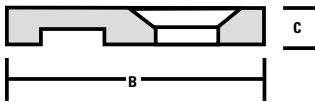
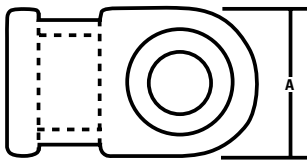
## Cable Tie Mount



P/N	Mounting	Dimensions-Inches		
		A	B	C
<b>CTM0</b>	#6 Screw	.380	.600	.265
<b>CTM1</b>	#8 Screw	.380	.600	.265
<b>CTM2</b>	#8 Screw	.620	.875	.375
<b>CTM3</b>	#10 Screw	.620	.875	.375
<b>CTM4</b>	1/4" Screw	.620	.875	.375

## Low Profile Cable Tie Mount

P/N	Mounting	Dimensions-Inches		
		A	B	C
<b>MB2</b>	#8 Screw	.495	.810	.135



## Tensioning Tool

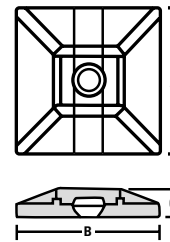
The Mark 7's ergonomic design ideally fits the operator's hand, while an internal low friction roller bearing mechanism reduces hand effort and provides a smooth stroke action. A precision ground, razor sharp blade assures flush, clean cut-offs while weighing only 9.5 ounces.

A one inch stroke reduces the number of trigger cycles required. The Mark 7 offers quick, infinite adjustability within its broad cut-off tension capability (T18-T50 tytraps).

**P/N MK7**

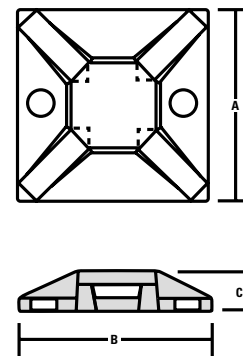


## Cable Tie Mount Base (2-way)



P/N	Mounting	Dimensions-Inches		
		A	B	C
<b>MB4SH</b>	#6 Screw	1.125	1.125	.210
<b>MB4SHA</b>	Adhesive	1.125	1.125	.210

## Cable Tie Mount Base (4-way)



P/N	Mounting	Dimensions-Inches		
		A	B	C
<b>MB2.5A</b>	Adhesive	0.625	0.625	0.130
<b>MB3</b>	#4 Screw	0.750	0.750	0.150
<b>MB3A</b>	Adhesive	0.750	0.750	0.150
<b>MB4</b>	#8 Screw	1.125	1.125	0.190
<b>MB4A</b>	Adhesive	1.125	1.125	0.190
<b>MB5</b>	#8 Screw	1.500	1.500	0.250
<b>MB5A</b>	Adhesive	1.500	1.500	0.250